

Profile Photo Guidelines and Requirements

Your picture is an important part of your profile; it gives potential clients/students their first impression of you. Teachers with excellent profile photos will be promoted by our marketing team. Please see these examples, requirements, and instructions to help you choose or take a great picture. NOTE: Your photos will be square or rectangular on the Samata Site.

Good Examples





Bad Examples

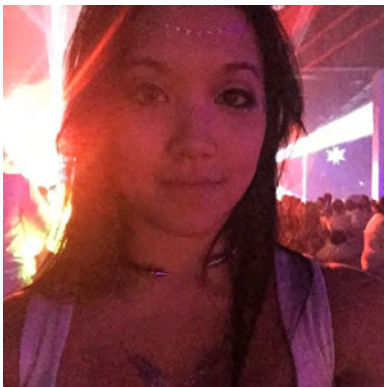
Distracting clothing



Shows other people



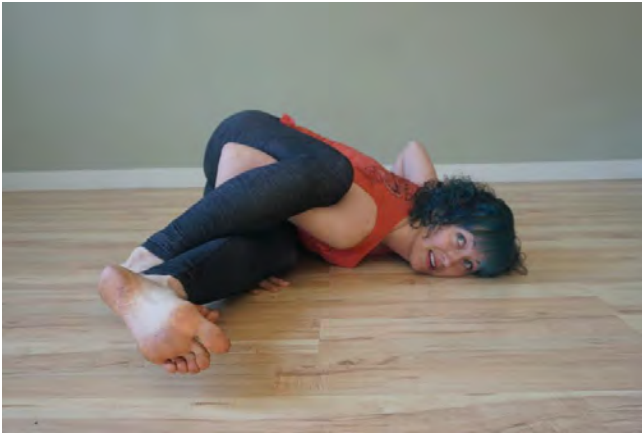
Face not clearly shown



selfie



awkward poses



busy backgrounds



blurry - sunglasses

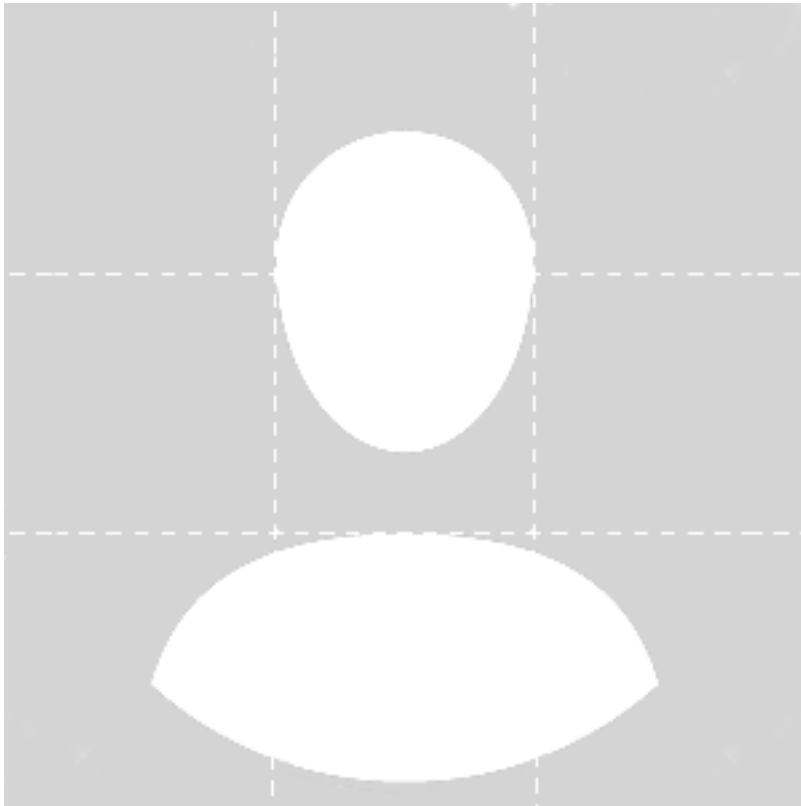


~~~~~

The best profile pictures are:

- Friendly and professional-looking
- You want to make a good first impression! Especially if you have a professional teaching profile, it is important to have a good picture.
- Clear, with good lighting.
- This shows that you care about quality, and good lighting will make you look more professional. Do not take your photo at night and use a dark or blurry picture.
- Close-up, and recognizable

Sample of Proportions:



Students/clients will feel more confident booking a class or session with you when they can see who you are.

Choose the kind of picture that you would want to see in a magazine!

~\*~